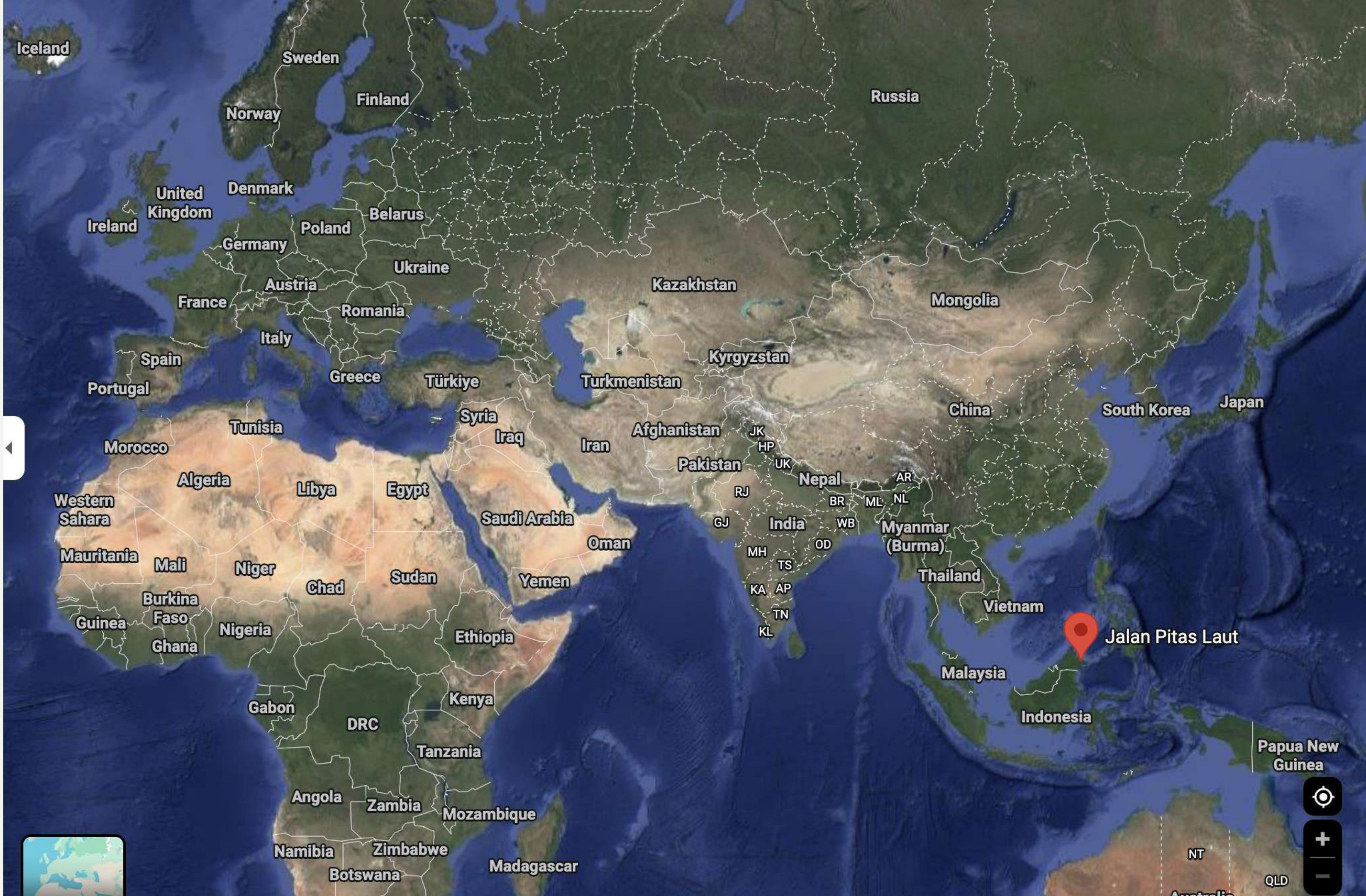




Communities in the Lead: Just Energy Transition in Sabah, Malaysia

Jun 12, 2026 | EKOenergy Webinar

LET'S VISIT PITAS LAUT...





HOME TO INDIGENOUS SULUK, IT IS A WORLD-RECOGNIZED ECOSYSTEM.





THEY ARE COMMITTED STEWARDS OF THEIR LAND AND WATERS.





THE COMMUNITY HAD A PROPOSAL. OUR LOCAL PARTNERS LISTENED.

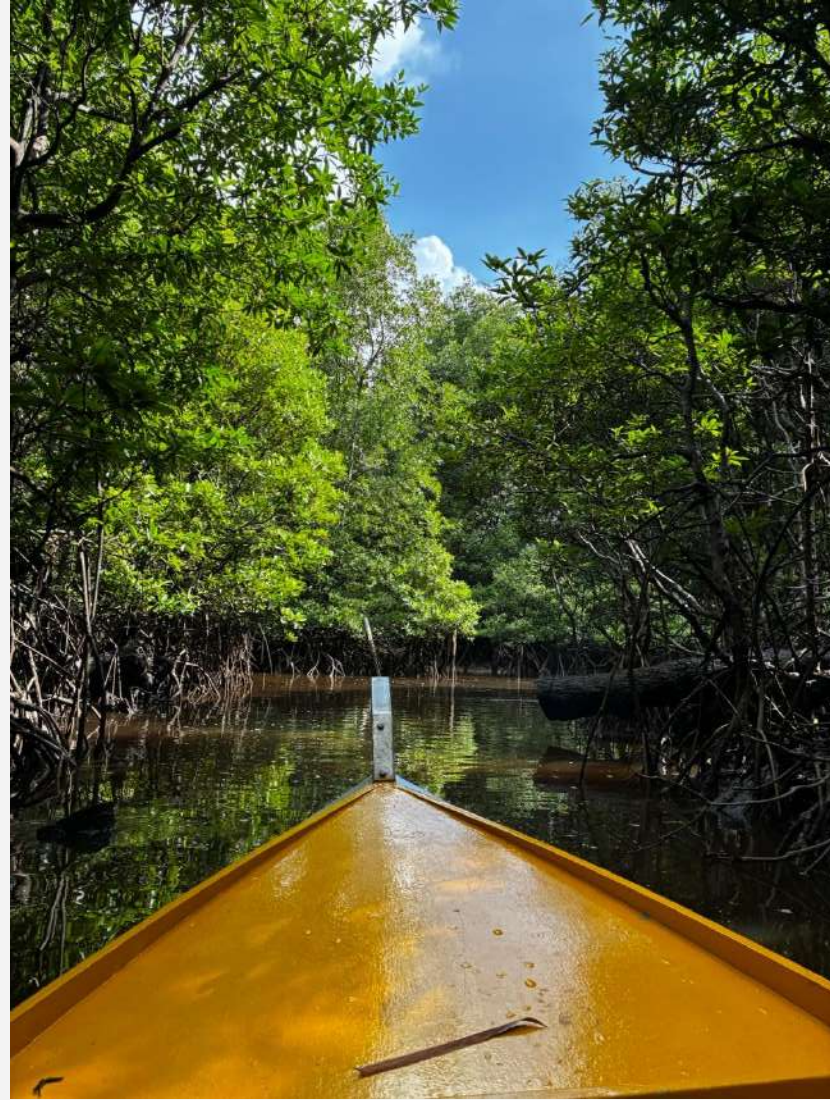


EKOenergy
ecolabel





100+ KILOGRAMS. LORRY TO BIG BOATS TO SMALL BOATS.





THEY BUILT A COMMUNITY CENTER, A SOLAR MINI-GRID, AND A BRIDGE.





ELECTED COMMUNITY ENERGY COMMITTEE. THEIR RULES & RATES.





TRAINING ON OPERATIONS, MAINTENANCE, AND RECORDKEEPING.





IN DECEMBER 2025, PITAS LAUT'S SOLAR MINI-GRID WAS SWITCHED ON.



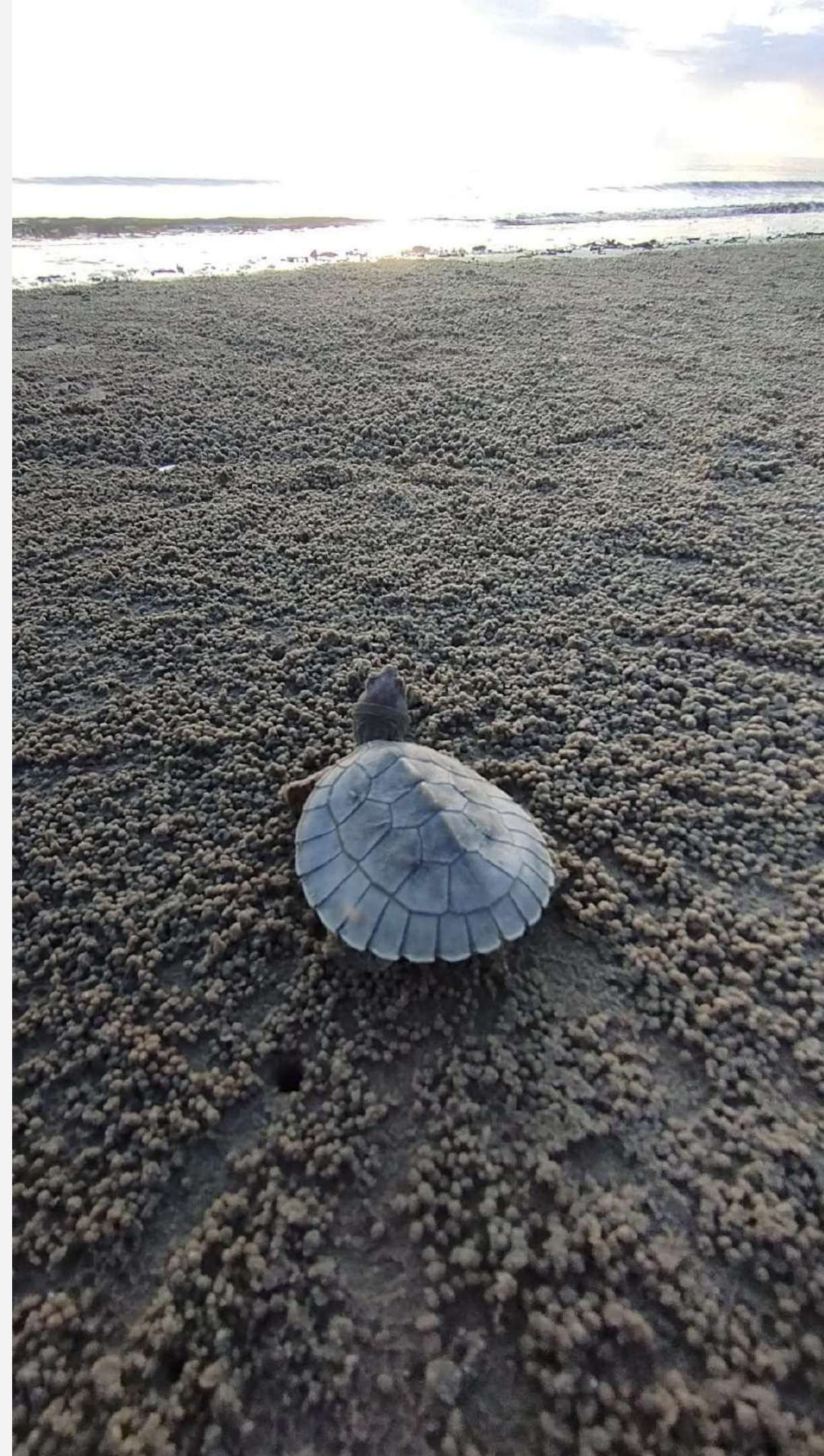


"What's on the menu? Fresh Frozen Sea Food. Snacks. Home-made Goodness. If you miss the taste of the village, come and stop by."



Source: Pitas Laut Village Community Association Facebook Group

NOW, LOCAL BUSINESSES ARE THRIVING.



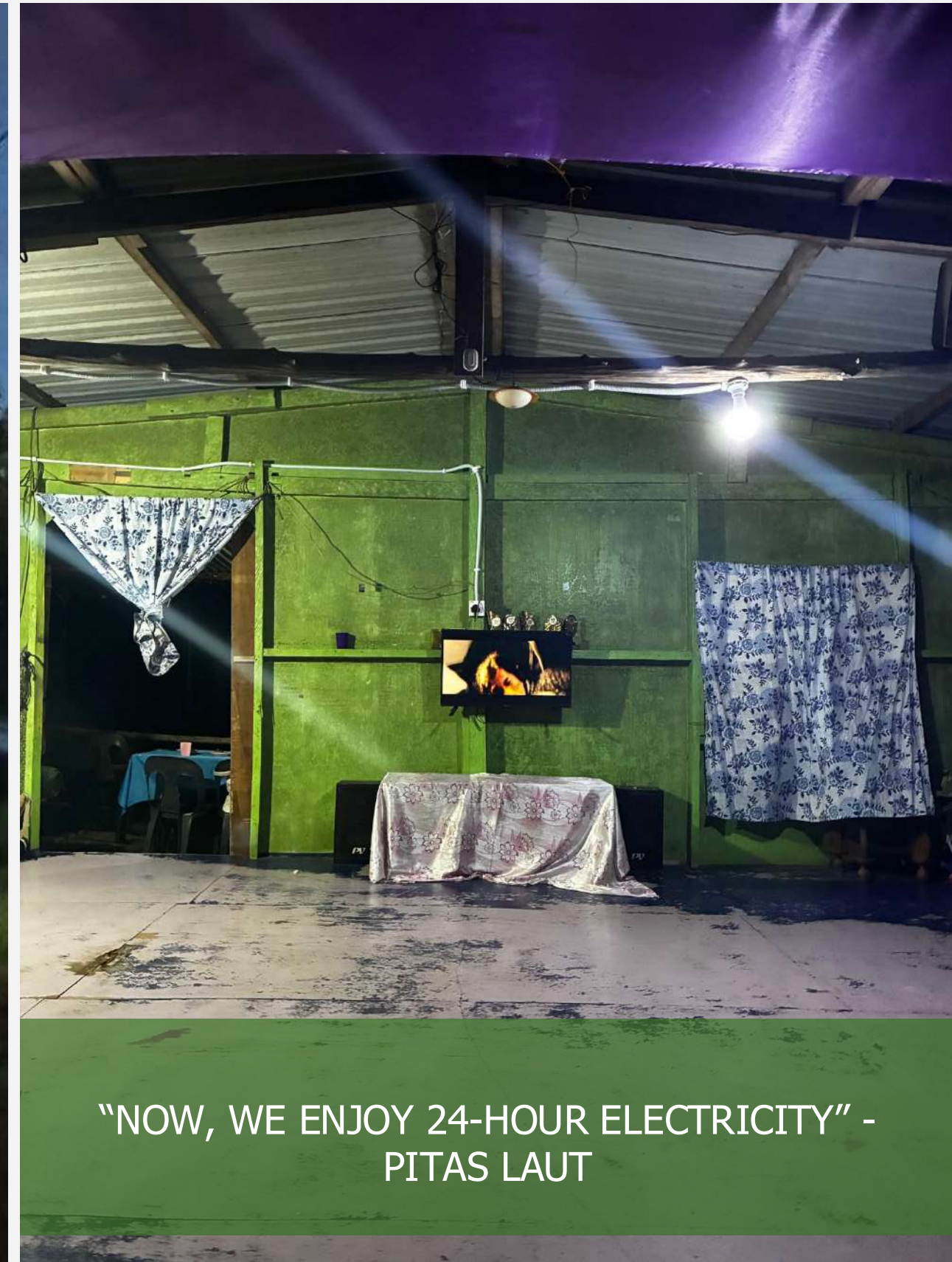
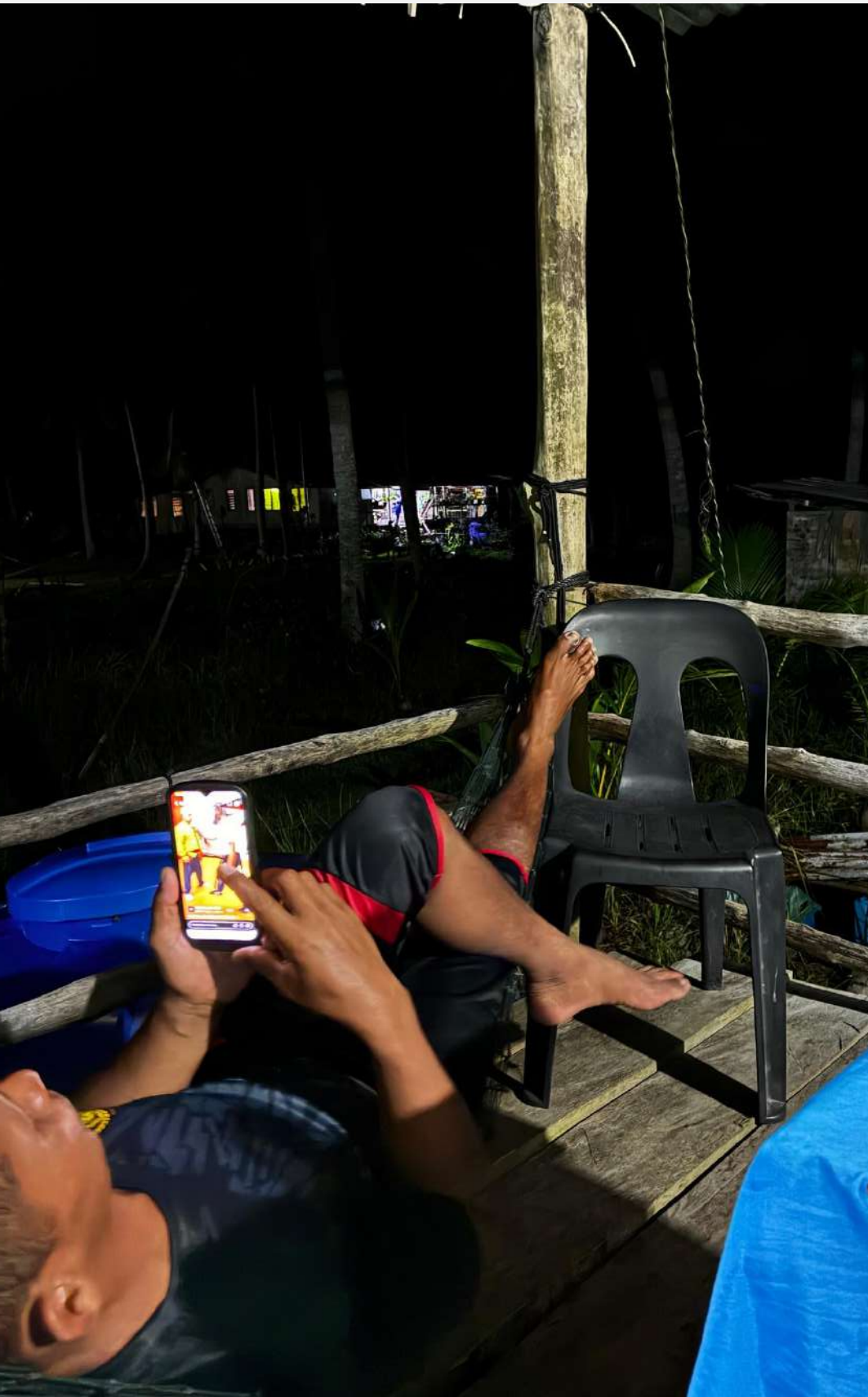
TURTLES ARE THRIVING TOO. ~200 HATCHLINGS RELEASED IN 1 YEAR.



"Our original purpose is to restore marine life on this beach - to change our own village. And it turns out we can finally achieve what we want."
- Fauziah, Pitas Laut Women's Group



LIFE IS MORE COMFORTABLE WITH LIGHT AT NIGHT.



"NOW, WE ENJOY 24-HOUR ELECTRICITY" -
PITAS LAUT

An aerial photograph of a lush tropical forest. The forest is dense with various types of trees and plants, including palm trees and broad-leafed species. A central path or road, possibly a dirt road or a narrow railway track, runs vertically through the middle of the forest. The path is lighter in color than the surrounding greenery. The overall scene is vibrant and shows a well-maintained area within a natural setting.

WHAT WORKED?

1. LED BY COMMUNITY EXPERTISE.

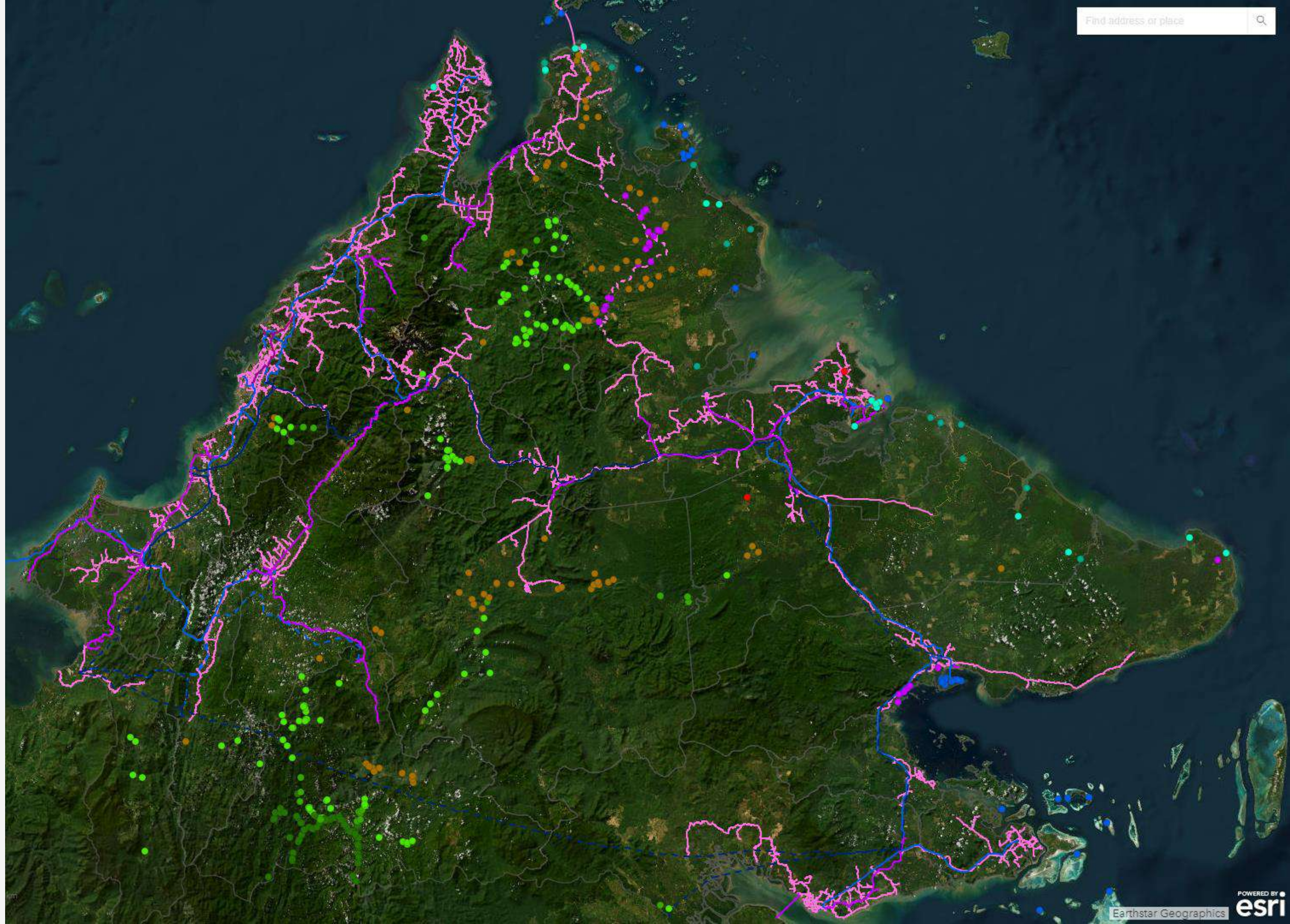
2. SUPPORTED BY LOCAL PARTNERS.

3. TRUST FROM FUNDING PARTNERS.

THIS STORY
WILL SCALE
ACROSS
SABAH.

200+ RE
COMMUNITY-
MANAGED
MINI-GRIDS.

60,000
PEOPLE
ELECTRIFIED.



The Sabah Renewable Energy Rural Electrification (Sabah RE2) Roadmap is a public-civic partnership and long-term program dedicated to achieving 100% energy access in Sabah, Malaysia.

The RE2 Consortium is working with the Sabah state government and national and global actors to advance the Sabah RE2 Roadmap.



green empowerment



At Pre-scale Stage, we are collecting evidence of impact with demonstration projects to catalyze public funding and climate financing for scale.



	Year 1	Year 2 – 4	Year 5 - 7	Year 8 - 10
Outputs	203 unelectrified villages are project-ready	7 systems	28 systems	168 systems
Funding type	grants	grants	grants + subsidies	100% ENERGY ACCESS
Current Status	· PUBLICATION + RECOGNITION OF THE RE2 ROADMAP	· DEMONSTRATION PILOTS FOR ADVOCACY	· ENABLING POLICY AND REGULATIONS	

We are here.



EKOenergy is supporting ~6 more solar PV mini-grids to advance the Sabah RE2 Roadmap. Demonstration + Evidence + Advocacy = Scale



	Year 1	Year 2 - 4	Year 5 - 7	Year 8 - 10
Outputs	203 unelectrified villages are project-ready	7 systems	25 systems	168 systems
Funding type	grants	grants	grants + subsidies	100% ENERGY ACCESS
Current Status	· PUBLICATION + RECOGNITION OF THE RE2 ROADMAP	· DEMONSTRATION PILOTS FOR ADVOCACY	· ENABLING POLICY AND REGULATIONS	



We are here.



WE ARE CONNECTED IN THIS ECOSYSTEM.





Thank you for the partnership.

—

Geo Corneby
Asia Program Director
geo@greenempowerment.org



green empowerment

